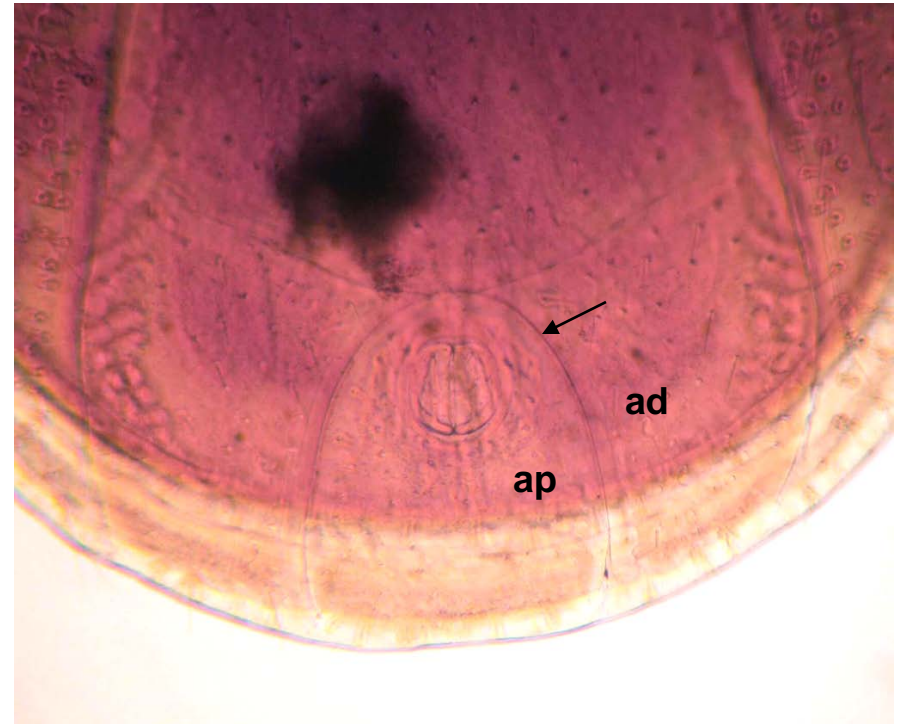
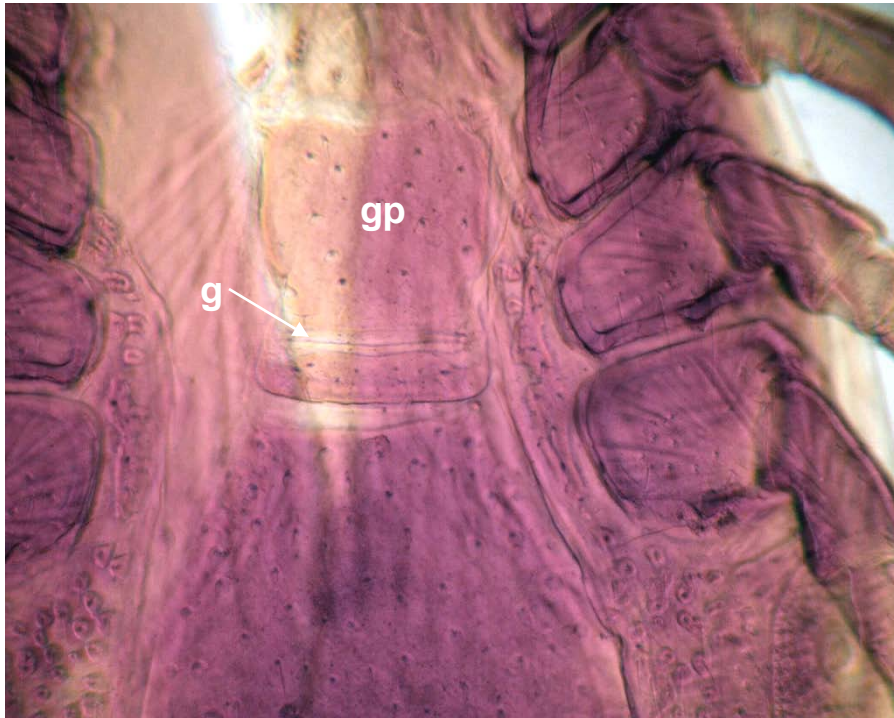


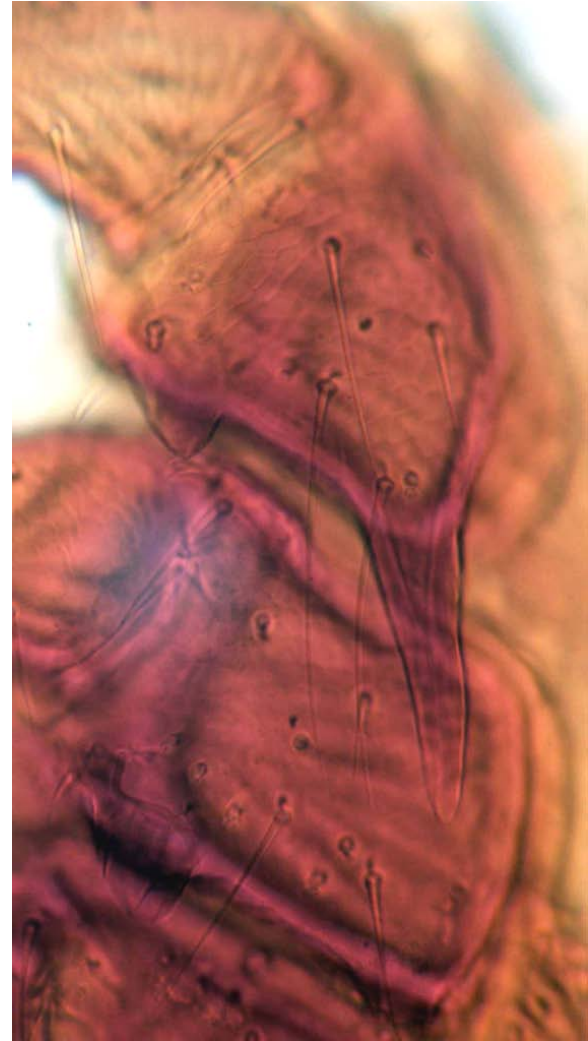
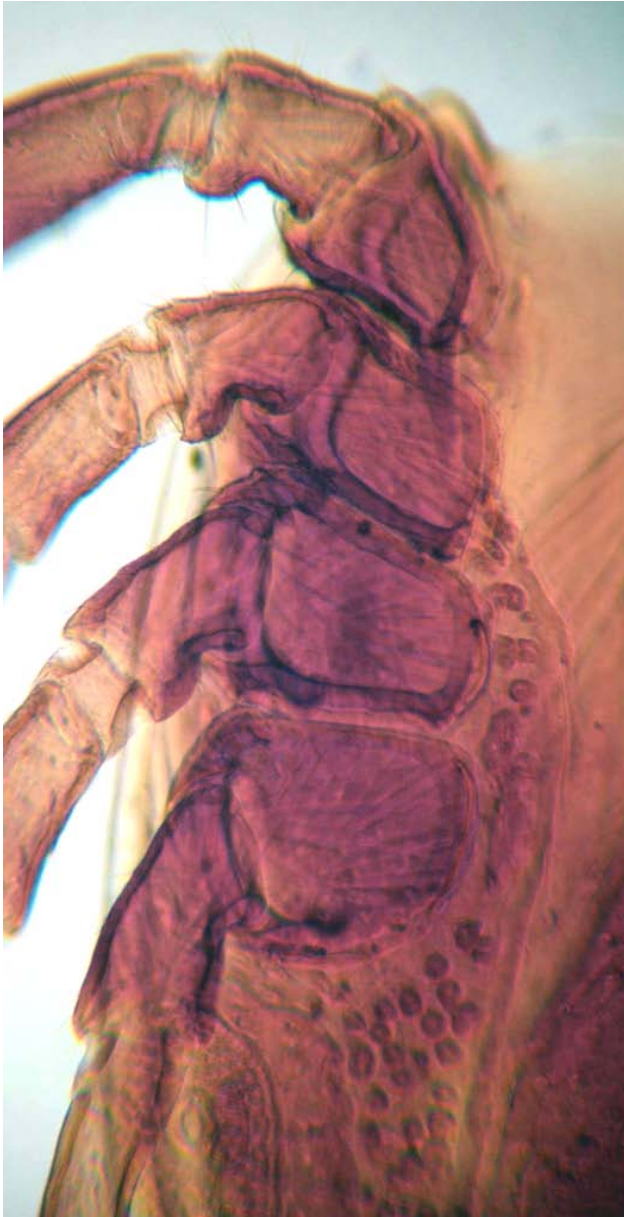
Ixodes sp. entire. Note festoons absent (posterior body margin).



Ixodes sp.: gonopore and genital plate (left); anal groove (right, arrow). Note: absence of festoons, and anal groove anterior to anus is characteristic for this genus. Legend: ad, adanal plate; ap, anal plate; g, gonopore; gp, genital plate.



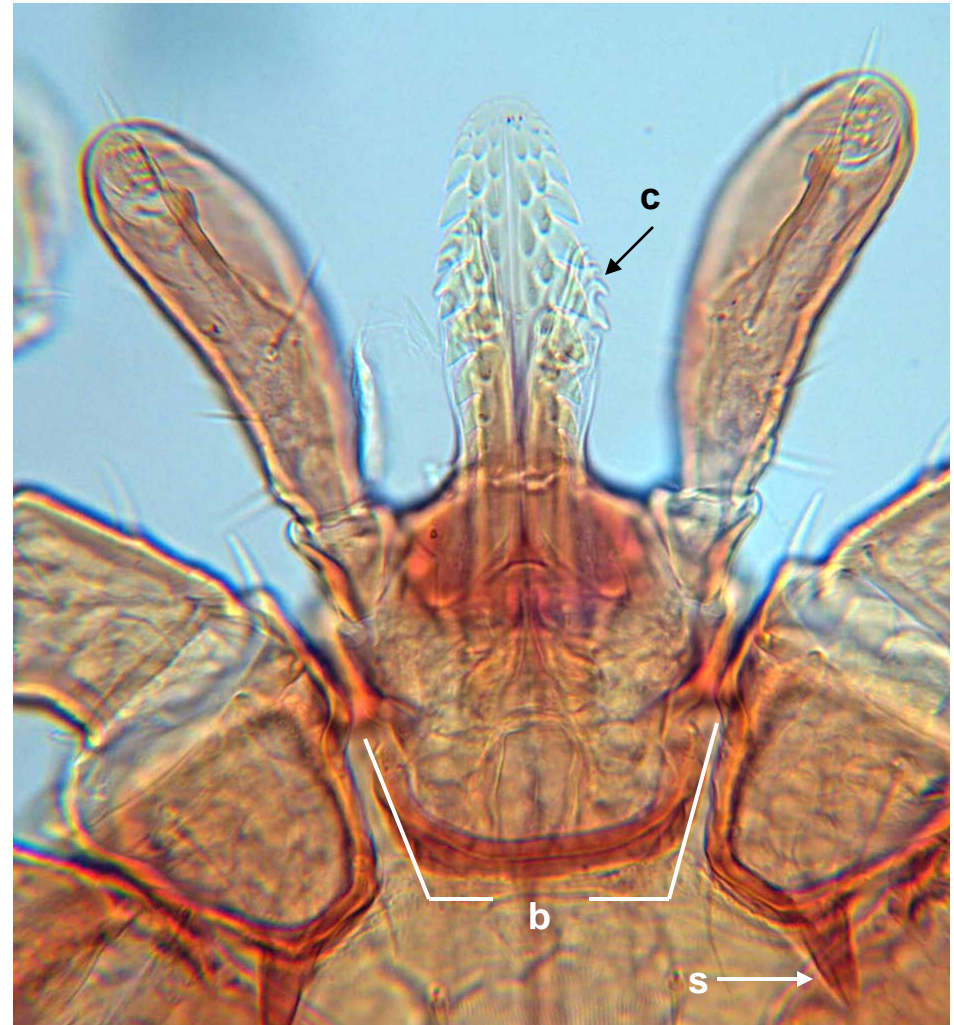
Ixodes sp.: adult coxae I – IV (left),
s, spiracle; coxa I spur (right).



Ixodes sp.: adult mouth parts (two depth of field views).
Legend: c, chelicerae (distal tips); h, hypostome, p, palp.



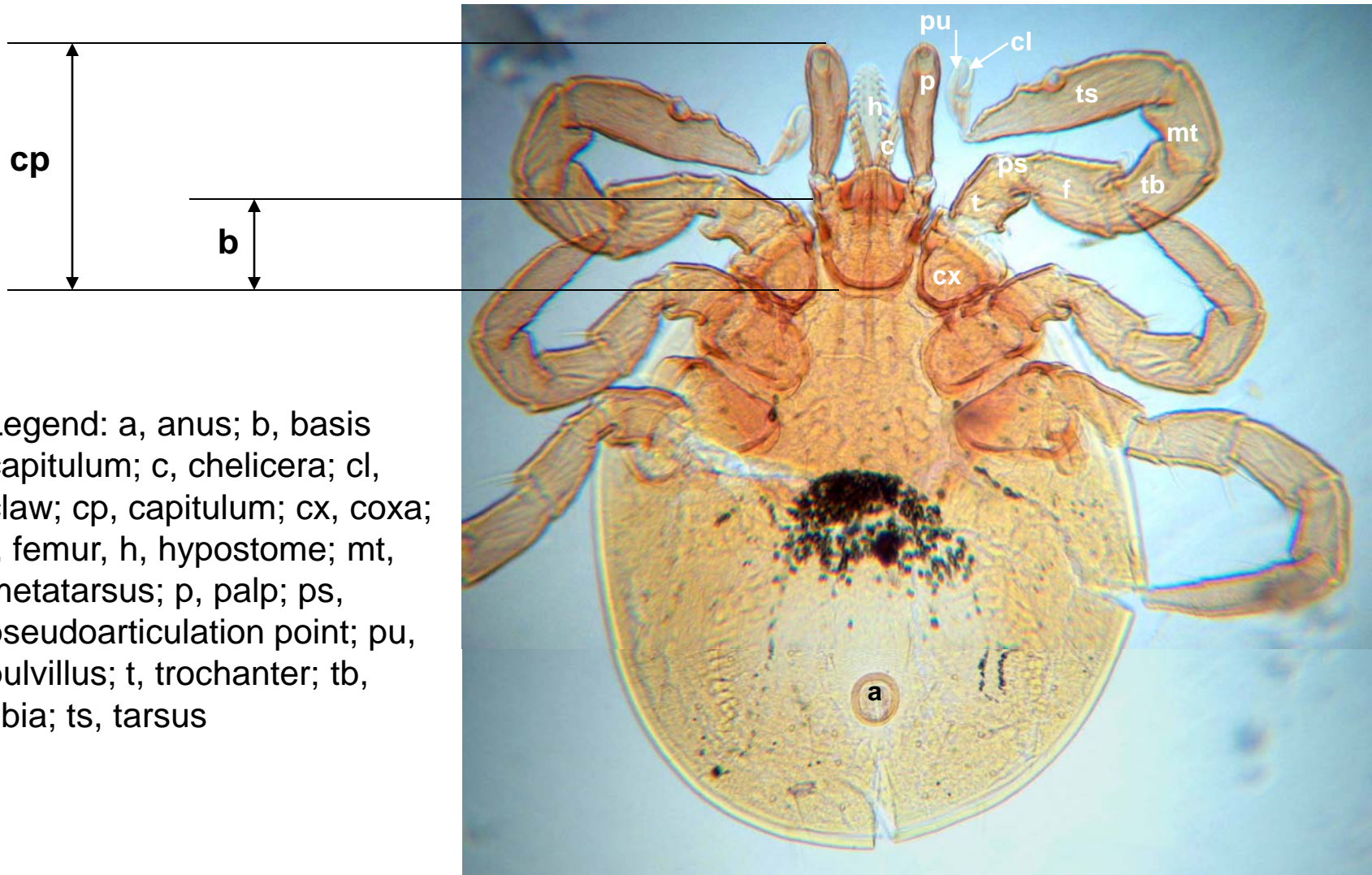
Ixodes sp.: larval mouth parts (two individuals).
Legend; b, basis capitulum; c, chelicera (partially retracted);
h, hypostome; p, palp; s, spur of coxa I.



Ixodes sp.; hexapod larva.



Ixodes sp.; hexapod larva.



Legend: a, anus; b, basis capitulum; c, chelicera; cl, claw; cp, capitulum; cx, coxa; f, femur, h, hypostome; mt, metatarsus; p, palp; ps, pseudoarticulation point; pu, pulvillus; t, trochanter; tb, tibia; ts, tarsus